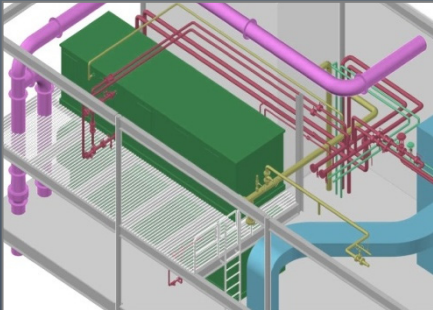
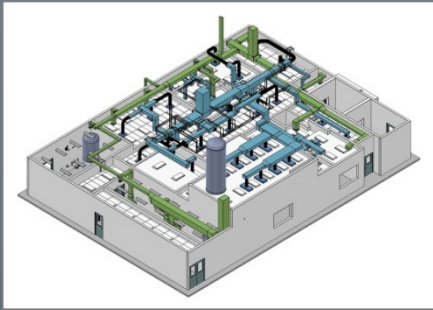




# Engineering & Design



DME Alliance offers design solutions to meet the full range of your facility engineering needs, from lab-office buildings to critical utilities to complex manufacturing facilities. Company capabilities are an excellent fit to the unique needs of process facilities in the fine chemicals pharmaceutical, biotechnology, medical device, food/beverage, personal care and semiconductor industries. The depth of DME's team experience and expertise is demonstrated by a strong project history with regulated facilities and advanced technology applications. These technical strengths combine with the project know-how to get the job done right.



---

## *Core Capabilities*

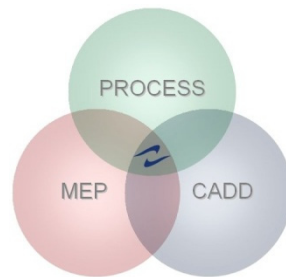
- *Process Engineering*
  - *Facility Design*
  - *Master Planning*
  - *Facility Programming*
  - *Conceptual Design*
  - *CADD/Detailed Design*
  - *Project Management*
  - *Commissioning*
  - *Regulatory Compliance*
- 

Since its inception in 1998, DME Alliance has earned a reputation for exceptional integrity, service and value. DME focuses on building long-term client relationships that foster a collegial environment where the success of the project is top priority. This requires honest communication and an unflinching commitment to deliver a high quality product. DME Alliance values your input and designs to fit your need.

**DME** Alliance Inc  
ENGINEERING CONSULTANTS

*...where Process Science meets  
Engineering Excellence.®*

# Services Services



## **PROCESS**

- *Plant Design & Scale up*
- *Optimization / Debottlenecking*
- *Process Remediation*
- *PHA / HAZOPs*
- *Bioprocessing*
- *Bulk Chemicals*
- *Solids Handling*
- *Fill-Finish*
- *Packaging*

## **PLUMBING / FIRE PROTECTION**

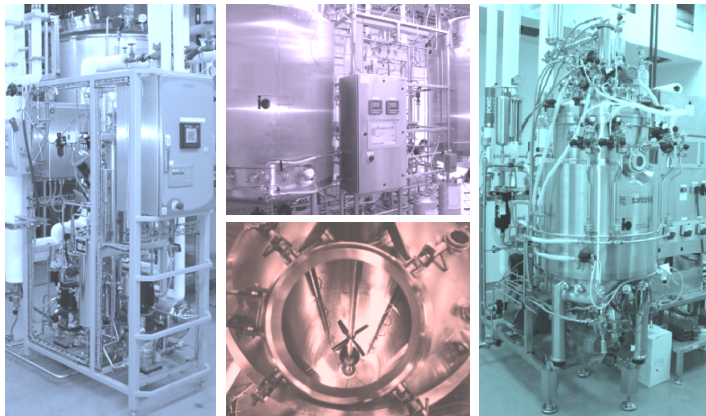
- *Domestic Water*
- *Sanitary Drainage*
- *Fire Protection / Suppression*

## **MECHANICAL**

- *HVAC*
- *Process Piping*
- *Plant Utilities*
- *Specialty Gasses*
- *Purified Water*
- *Chilled Water / Glycol Systems*
- *Process Heating/Cooling*
- *Clean Utility Systems*

## **ELECTRICAL**

- *Power Distribution*
- *Emergency Power*
- *Lighting*
- *Security / Telecom*



# Experience Experience

**Clean Space**

**Manufacturing**

**Process Systems**

**Laboratories**

**Pilot Plants**

**Data Centers**

**Central Utilities**

**Light Industrial**

**Warehousing**

**Vivariums**

**DME Alliance Inc**  
ENGINEERING CONSULTANTS

*...where Process Science meets  
Engineering Excellence.®*